

REVISION

NOTES:

1. STANDARD PART SET UP AS ASP.
2. Ⓢ REPRESENTS A CRITICAL DIMENSION.
3. MAXIMUM BURR ALLOWANCE: .038 [.0015].
4. MINIMUM PUSHOUT FORCE: 2.22N [.5LB].
5. PARTS TO BE PACKAGED IN TRAYS.

0	DF	S HILLERICH
4/3/2007		ECN-74142
ISSUE FOR REVIEW.		

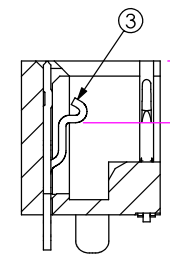
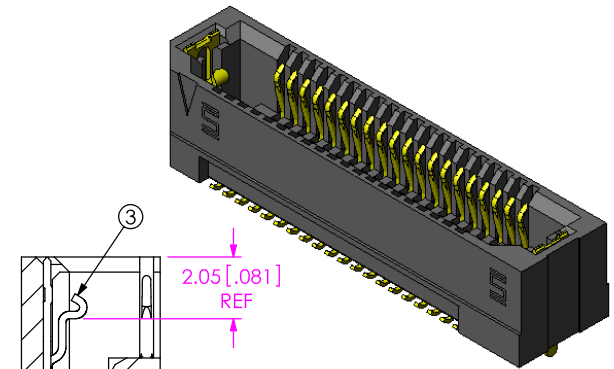
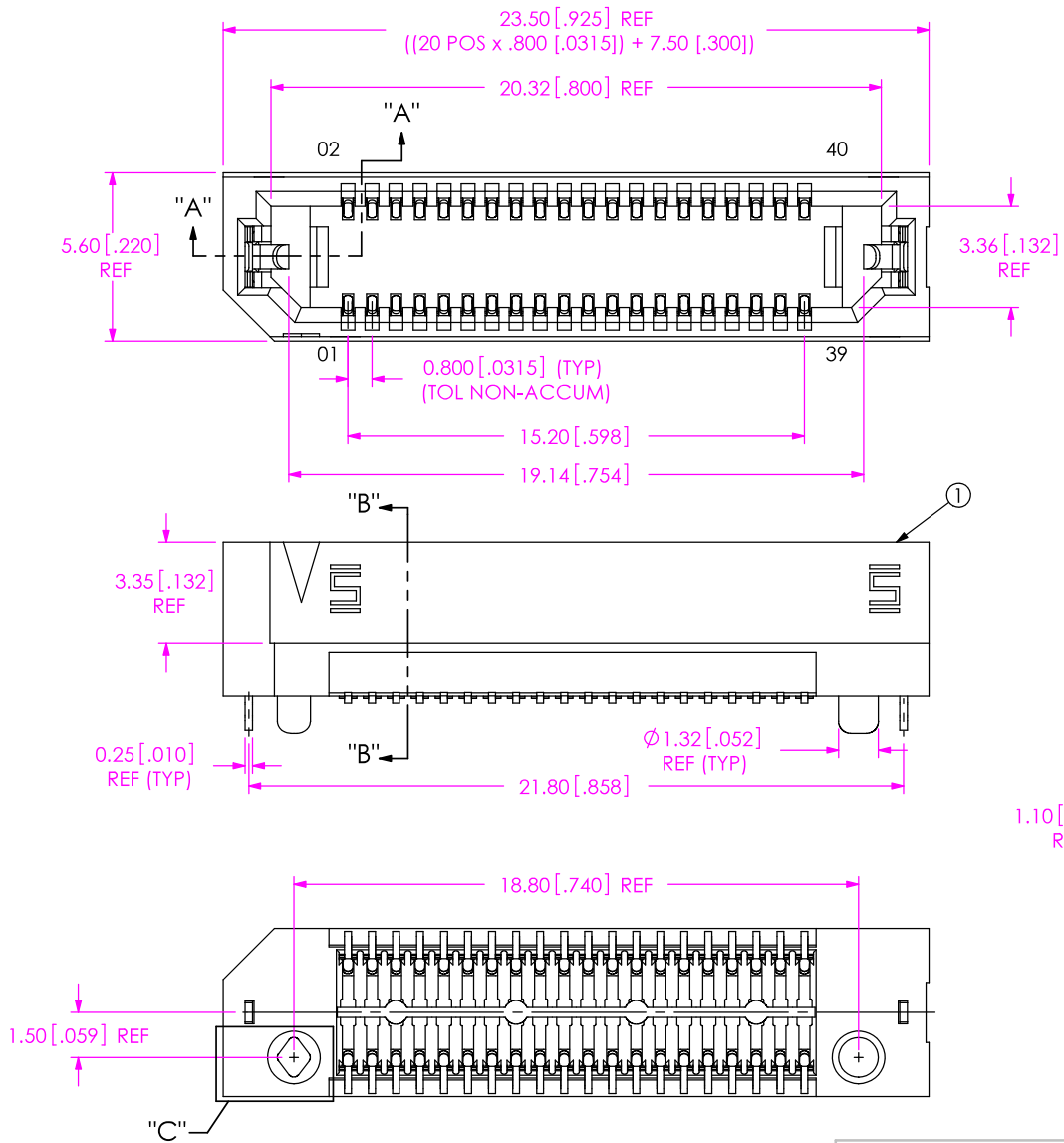
NOT RELEASED FOR PRODUCTION

USE FOR QUOTING, PRELIMINARY DESIGN, PROTOTYPING AND INFORMATIONAL PURPOSES ONLY

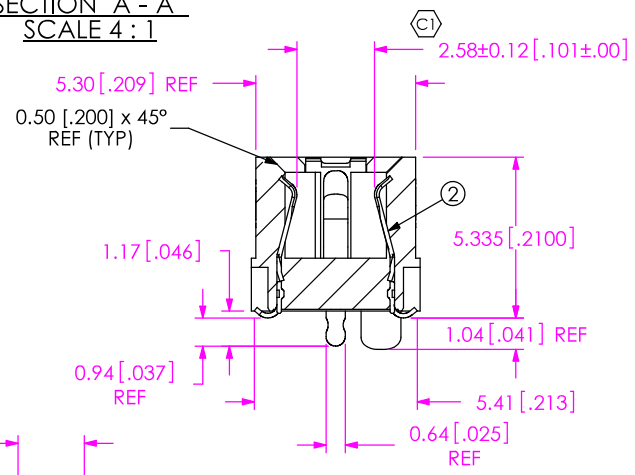
THIS DESIGN HAS NOT BEEN APPROVED BY ENGINEERING. DO NOT DISTRIBUTE THIS PRINT.

ACCEPTANCE OF DRAWING  
 ACCEPTED WITH DEVIATIONS LISTED

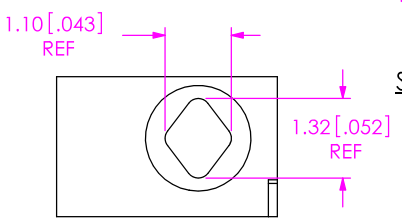
DATE: \_\_\_\_\_  
 COMPANY: \_\_\_\_\_  
 CUSTOMER SIGNATURE \_\_\_\_\_  
 PRINTED NAME \_\_\_\_\_  
 PHONE NO: \_\_\_\_\_  
 FAX NO: \_\_\_\_\_



SECTION "A"-"A"  
SCALE 4 : 1



SECTION "B"-"B"  
SCALE 4 : 1



DETAIL "C"  
SCALE 8 : 1

ITEM NO.	PART NUMBER	QUANTITY	MATERIAL
1	ERF8-20-05.0-DV	1.0000	VECTRA E130i, COLOR: BLACK
2	C-211-05.0-S	40.0000	BeCu, 390 HT
3	WT-30-01-T	2.0000	BeCu, #25, 1/2 HT
4	ASP-TRAY	1.0000	BLACK HIPS

UNLESS OTHERWISE SPECIFIED, DIMENSIONS ARE IN INCHES.  
 TOLERANCES ARE:  
 DECIMALS ANGLES  
 .XX: ±.01[.3] 2°  
 .XXX: ±.005[.13]  
 .XXXX: ±.0020[.051]

PROPRIETARY NOTE  
 THIS DOCUMENT CONTAINS INFORMATION CONFIDENTIAL AND PROPRIETARY TO SAMTEC, INC. AND SHALL NOT BE REPRODUCED OR TRANSFERRED TO OTHER DOCUMENTS OR DISCLOSED TO OTHERS OR USED FOR ANY PURPOSE OTHER THAN THAT WHICH IT WAS OBTAINED WITHOUT THE EXPRESSED WRITTEN CONSENT OF SAMTEC, INC.

**SAMTEC**

520 PARK EAST BLVD, NEW ALBANY, IN 47150  
 \* PHONE: 812.944.6733 FAX: 812.948.5047  
 e-Mail: [INFO@SAMTEC.COM](mailto:INFO@SAMTEC.COM) CODE: 55322

DO NOT SCALE DRAWING SHEET SCALE: 3:1  
 PLATING:  
 CONTACT AREA: .000030 GOLD OVER .000050 NICKEL  
 REMAINDER: .000200 REF TIN OVER .000050 NICKEL

DESCRIPTION: ERF8 ASSEMBLY  
 DWG. NO. ASP-130367-01  
 BY: D FRALEY 03/22/2007 SHEET 1 OF 1