

REVISION

0	JB	D UNDERWOOD
10/11/2007	ECN-81445	

ISSUE FOR REVIEW

1	TW	D FRALEY
2/9/2008	ECN-86016	

TOP VIEW: ADD CRITICAL 'C9' TO 31.14 DIM. FRONT VIEW: ADD CRITICAL 'C10' TO 33.80 DIM. ADD '2' MAX SWAY (TYP) SECTION 'B'-'B': CHG 5.407 DIM TO 5.41 +.18/- .13

A	TT	D Fletcher
5/13/2008	ECN-90729	

RELEASE FOR PRODUCTION. BOTTOM VIEW: ADD 27.20, BOM CHG ITEM 4 FROM ASP-TRAY TO TY-ASP127...

B	LF	D FRALEY
2/5/2010	ECN-124680	

CHG ITEM 1 TO ERF8-035-05-0-DVAL: CHG NOTE 1 FROM 35 POS TO STANDARD PART SETUP AS ASP

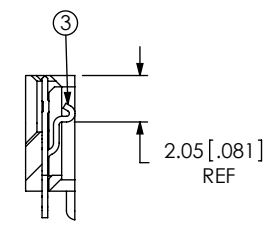
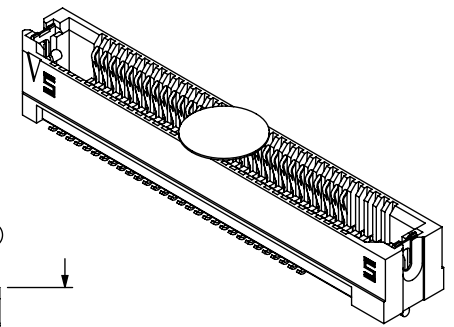
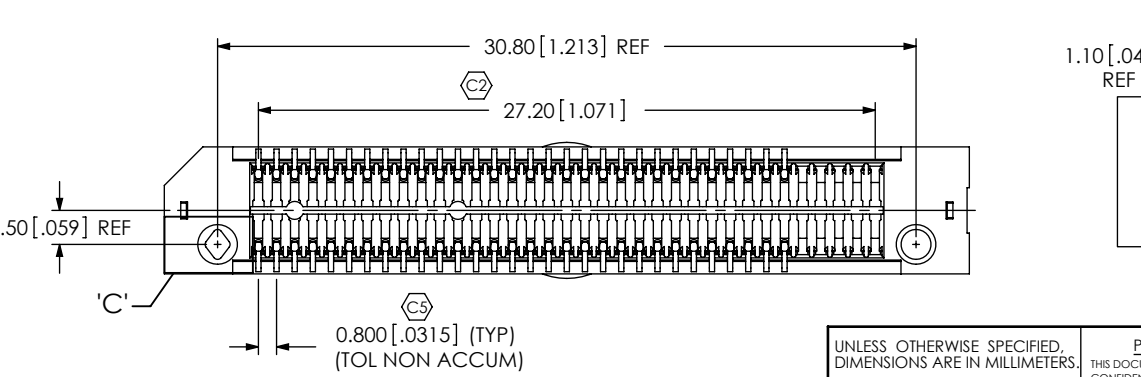
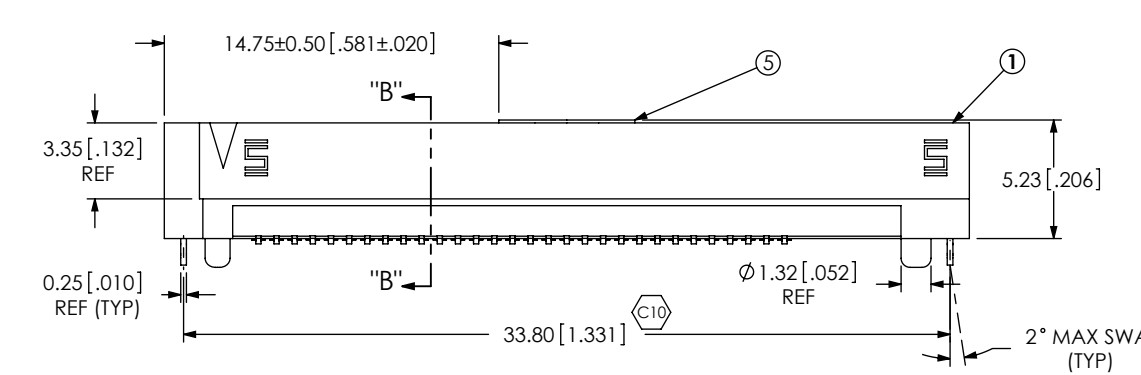
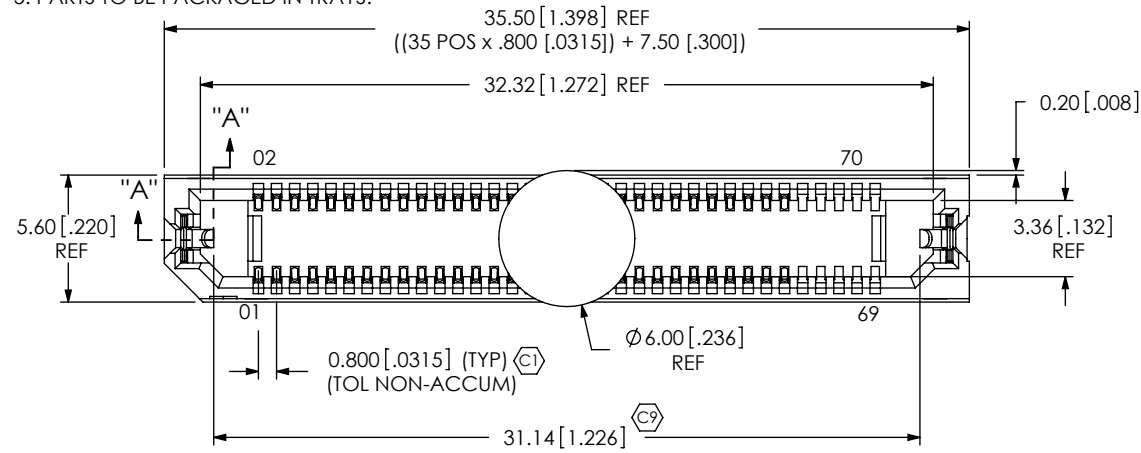
C	JB	Z Paden
3/2/2010	ECN-126248	

SH# 2: RECOMMENDED PCB LAYOUT: DEL DIM 4.90(TYP), ADD DIM 1.80(TYP), CHG DIM 5.61 TO 5.60, CHG Ø0.83±0.02 TO Ø0.83 ± 0.05. ADD NOTE 'TO BE SOLDERED USING PASTE-IN-HOLE TECHNOLOGY'. ADD NOTE 'CONNECTOR OUTLINE'. RECOMMENDED STENCIL LAYOUT: CHG 30.80 TO 33.80, CHG Ø1.58(2 PLCS) TO Ø2.24 (2 PLCS).

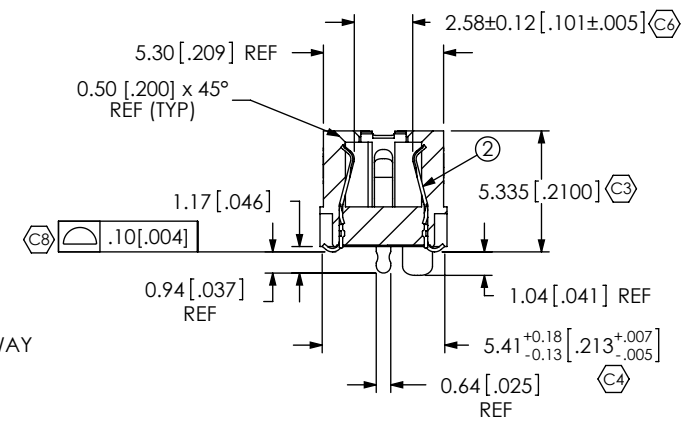
DATE:	COMPANY:	CUSTOMER SIGNATURE

ACCEPTANCE OF DRAWING	ACCEPTED WITH DEVIATIONS LISTED

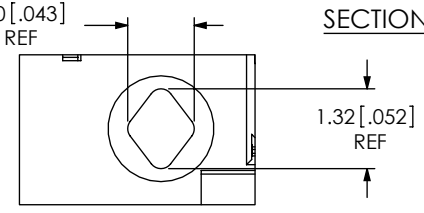
- NOTES:
 1. STANDARD PART SETUP AS ASP NOT AVAILABLE AS STANDARD.
 2. Ⓢ REPRESENTS A CRITICAL DIMENSION.
 3. MAXIMUM BURR ALLOWANCE: .038 [.0015].
 4. MINIMUM PUSHOUT FORCE: 2.22N [.5LB].
 5. PARTS TO BE PACKAGED IN TRAYS.



SECTION "A"- "A"



SECTION "B"- "B"



DETAIL 'C' SCALE 8 : 1

ITEM NO.	PART NUMBER	QUANTITY	MATERIAL
1	ERF8-035-05-0-DV-L	1.0000	VECTRA E130i, COLOR: BLACK
2	C-211-05-0-S	70.000	BeCu, 390 HT
3	WT-30-01-F	2.0000	BeCu, #25, 1/2 HT
4	TY-ASP127	1.0000	BLACK HIPS
5	K-500-300	.50000	POLYIMIDE FILM

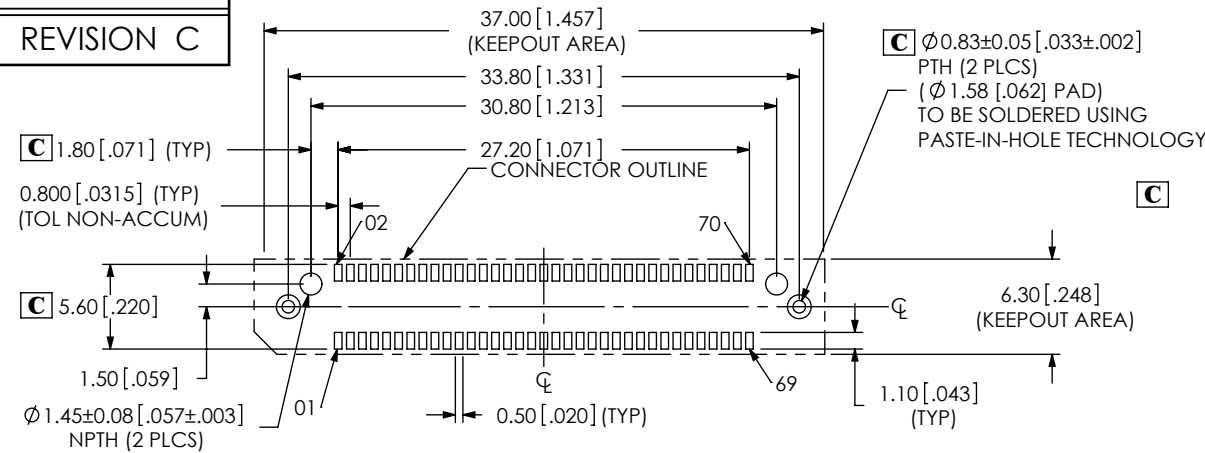
UNLESS OTHERWISE SPECIFIED, DIMENSIONS ARE IN MILLIMETERS. TOLERANCES ARE:
 DECIMALS ANGLES
 .X: ±.3[.01] 2°
 .XX: ±.13[.005]
 .XXX: ±.051[.0020]

PROPRIETARY NOTE
 THIS DOCUMENT CONTAINS INFORMATION CONFIDENTIAL AND PROPRIETARY TO SAMTEC, INC. AND SHALL NOT BE REPRODUCED OR TRANSFERRED TO OTHER DOCUMENTS OR DISCLOSED TO OTHERS OR USED FOR ANY PURPOSE OTHER THAN THAT WHICH IT WAS OBTAINED WITHOUT THE EXPRESSED WRITTEN CONSENT OF SAMTEC, INC.

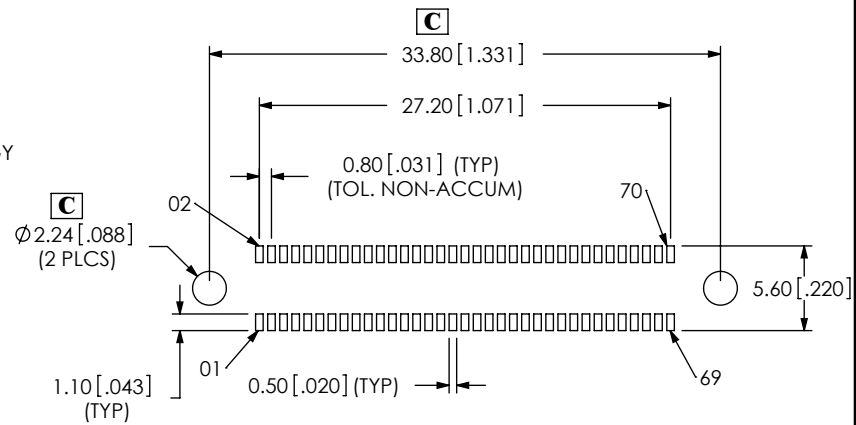
samtec
 520 PARK EAST BLVD, NEW ALBANY, IN 47150
 PHONE: 812-944-6733 FAX: 812-948-5047
 e-Mail: info@SAMTEC.com code 53322

DO NOT SCALE DRAWING SHEET SCALE: 3:1
 PLATING:
 CONTACT AREA: .000030 GOLD OVER .000050 NICKEL
 REMAINDER: .000200 REF TIN OVER .000050 NICKEL
 LATCHES: .000003 GOLD OVER .000050 NICKEL

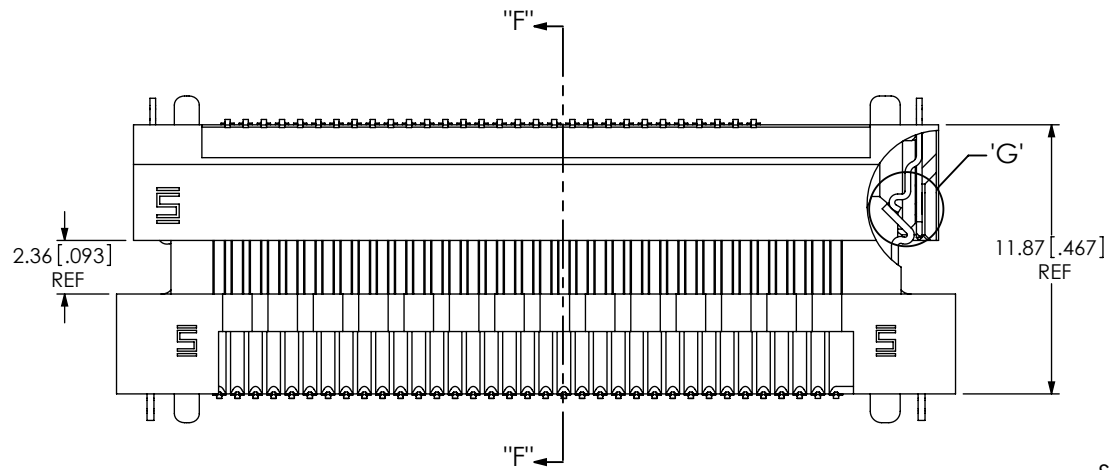
DESCRIPTION: ERF8 ASSEMBLY
 DWG. NO. ASP-135029-01



RECOMMENDED PCB LAYOUT

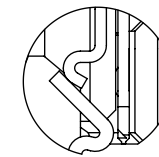


RECOMMENDED STENCIL LAYOUT

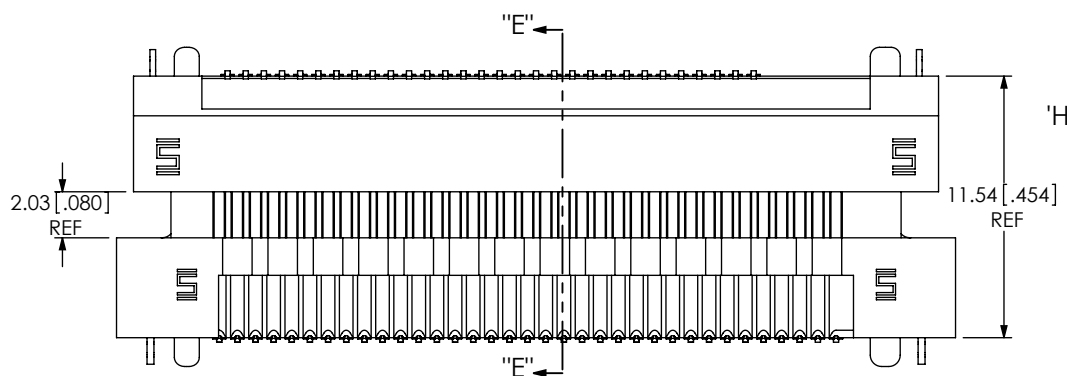


LATCH ENGAGING VIEW

SECTION "F"- "F"

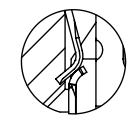


DETAIL 'G'
SCALE 6 : 1



PIN ENGAGING VIEW

SECTION "E"- "E"



DETAIL 'H'
SCALE 6 : 1

PROPRIETARY NOTE THIS DOCUMENT CONTAINS INFORMATION CONFIDENTIAL AND PROPRIETARY TO SAMTEC, INC. AND SHALL NOT BE REPRODUCED OR TRANSFERRED TO OTHER DOCUMENTS OR DISCLOSED TO OTHERS OR USED FOR ANY PURPOSE OTHER THAN THAT WHICH IT WAS OBTAINED WITHOUT THE EXPRESSED WRITTEN CONSENT OF SAMTEC, INC.	 520 PARK EAST BLVD, NEW ALBANY, IN 47150 PHONE: 812-944-6733 FAX: 812-948-5047 e-Mail info@SAMTEC.com code 55322	
	SHEET SCALE: 3:1	
	DESCRIPTION:	ERF8 ASSEMBLY
DWG. NO.	ASP-135029-01	
BY: J. BROWNING 10/12/2007	SHEET 2 OF 2	