



# COTS Micro-D Vertical Mount (Straight) Printed Circuit Board Connectors Metal Shell, .075 Inch Pitch

MR75 Series Vertical Mount PCB Connectors significantly reduce connector size and weight. They feature the same rugged construction as .100" pitch Micro-D PCB Connectors and are available with a variety of mounting hardware options to simplify installation.

- **9 Through 100 Contacts**
- **Tinned Terminals**
- **Environmentally Sealed**
- **Space Saving Design**

See Appendix for layout information.



### RELATED INFORMATION

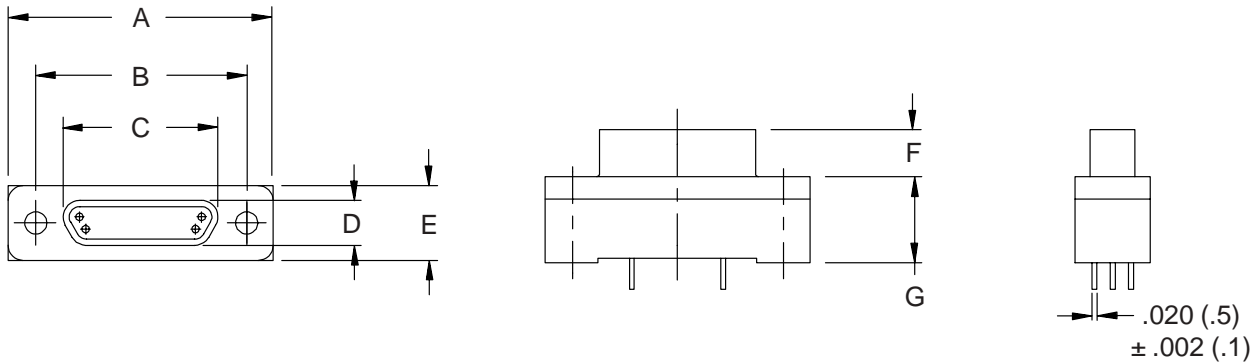
Performance Specifications	IBC*
Materials and Finishes	IBC*
Contact Arrangements	7-8
Panel Cutouts, Mounting Dimensions	9

\* Available on the Inside Back Cover Fold-Out

### HOW TO ORDER

Conn. Series	Style	No. of Contacts	Contact Type	Tail Length	Shell Plating	Mounting Hardware See Page B-17 For Illustrations
MR75	80 – Vertical Mount	9 15 21 25 31 37 51 100	P – Pin S – Socket	1 - .109 2 - .250	A – Cadmium B – Nickel	N - Thru-Hole (No Hardware) P - Jackpost R - Extended Jackpost SU - Jackpost and Threaded Insert VU - Rear Panel Mount Jackpost, .063" Panel Thickness, With Threaded Insert WU - Rear Panel Mount Jackpost, .047" Panel Thickness, With Threaded Insert NU - Threaded Insert Only (No Jackpost)
<b>Sample Part Number:</b>						
MR75	80	— 31	P	1	A	SU

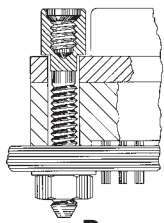
# COTS Micro-D Vertical Mount (Straight) Printed Circuit Board Connectors Metal Shell, .075 Inch Pitch



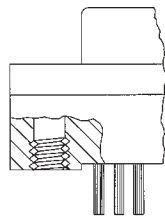
## DIMENSIONS

Layout	A Max	B	C	D	E Max	F Max	G Max
9P	.785 (19.9)	.565 (14.4)	.335 (8.5)	.185 (4.7)	.308 (7.8)	.184 (4.7)	.355 (9.0)
9S	.785 (19.9)	.565 (14.4)	.400 (10.2)	.251 (6.4)	.308 (7.8)	.197 (5.0)	.355 (9.0)
15P	.935 (23.7)	.715 (18.2)	.485 (12.3)	.185 (4.7)	.308 (7.8)	.184 (4.7)	.355 (9.0)
15S	.935 (23.7)	.715 (18.2)	.550 (14.0)	.251 (6.4)	.308 (7.8)	.197 (5.0)	.355 (9.0)
21P	1.085 (27.6)	.865 (22.0)	.635 (16.1)	.185 (4.7)	.308 (7.8)	.184 (4.7)	.355 (9.0)
21S	1.085 (27.6)	.865 (22.0)	.700 (17.8)	.251 (6.4)	.308 (7.8)	.197 (5.0)	.355 (9.0)
25P	1.185 (30.1)	.965 (24.5)	.735 (18.7)	.185 (4.7)	.308 (7.8)	.184 (4.7)	.355 (9.0)
25S	1.185 (30.1)	.965 (24.5)	.800 (20.3)	.251 (6.4)	.308 (7.8)	.197 (5.0)	.355 (9.0)
31P	1.335 (33.9)	1.115 (28.3)	.885 (22.5)	.185 (4.7)	.308 (7.8)	.184 (4.7)	.355 (9.0)
31S	1.335 (33.9)	1.115 (28.3)	.950 (24.1)	.251 (6.4)	.308 (7.8)	.197 (5.0)	.355 (9.0)
37P	1.485 (37.7)	1.265 (32.1)	1.035 (26.3)	.185 (4.7)	.308 (7.8)	.184 (4.7)	.355 (9.0)
37S	1.485 (37.7)	1.265 (32.1)	1.100 (27.9)	.251 (6.4)	.308 (7.8)	.197 (5.0)	.355 (9.0)
51P	1.435 (36.4)	1.215 (30.9)	.985 (25.0)	.228 (5.8)	.351 (8.9)	.184 (4.7)	.355 (9.0)
51S	1.435 (36.4)	1.215 (30.9)	1.050 (26.7)	.294 (7.5)	.351 (8.9)	.197 (5.0)	.355 (9.0)
100P	2.170 (55.1)	1.800 (45.7)	1.384 (35.2)	.271 (6.9)	.470 (11.9)	.184 (4.7)	.430 (10.9)
100S	2.170 (55.1)	1.800 (45.7)	1.508 (38.3)	.394 (10.0)	.470 (11.9)	.197 (5.0)	.430 (10.9)

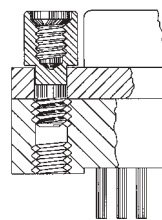
## PRINTED CIRCUIT BOARD CONNECTOR HARDWARE OPTIONS: .075 INCH PITCH



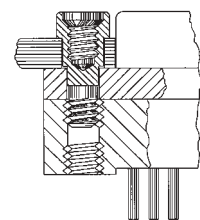
**P**  
Jackpost For Up  
To .062" Boards  
**R**  
Jackpost For Up  
To .196" Boards



**NU**  
Threaded Insert  
(No Jackpost)



**SU**  
Short Jackpost  
With Threaded Insert



**VU**  
Rear Panel Mount Jackpost  
With Threaded Insert  
(.062" Panel)  
**WU**  
Rear Panel Mount Jackpost  
With Threaded Insert  
(.047" Panel)

Note: #2-56 UNC-2B Thread For Sizes 9 thru 51  
#4-40 UNC-2B Thread For Size 100  
Metric dimensions (mm) are indicated in parentheses.